

Concept Design Synopsis  
For  
The Prairie du Chien Memorial  
Library  
Prairie du Chien, Wisconsin

April 8, 2014





## *Agenda*

- Space Needs/Assessment Re-Cap
- Design Stage – Where Are We in the Process ?
- Concept Exterior Images - Additions
- Concept Floor Plan
- Concept Interior Images
- Fountain Concept
- Budget – Target, Additives, and Deducts



## Space Needs/Assessment Re-Cap

- Was First Step in Multi-Step Process
- Structure is in Good Overall Condition
- Much Smaller Than One For a Population of Similar Size
- Library Needs Dedicated Spaces
- Library Needs to Double in Size
- Should Stay on Site





## Design Stage — Where Are We in the Process ?

1. Space Needs
2. **Concept Design**
3. Design Development
4. Construction Documents
5. Bidding and Construction

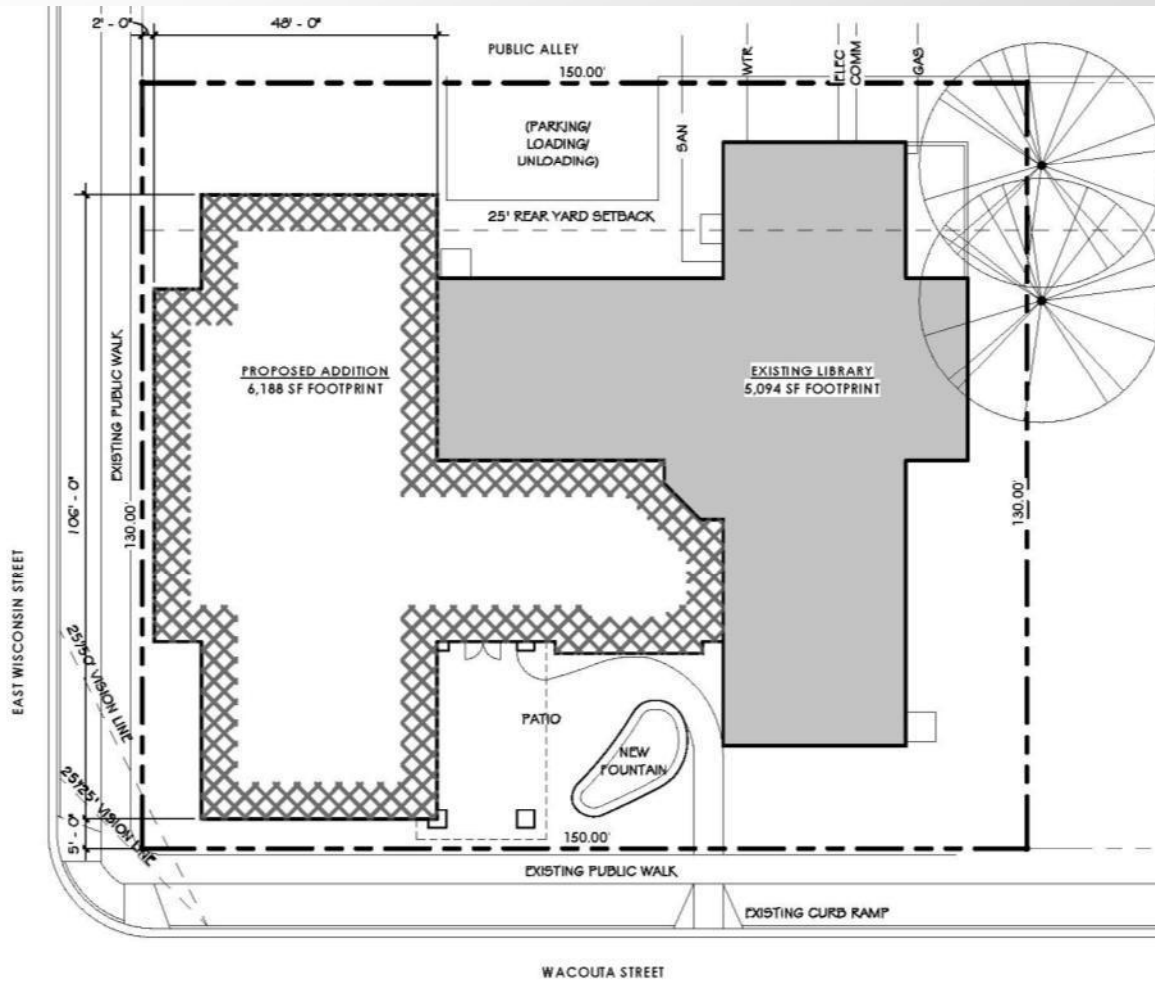


## Concept Design - A Description

Typically follows the Space Needs Phase and can aid in a Fundraising Campaign including the development of illustrative graphics to better communicate ideas, cost opinion refinement, and developing information needed for grant applications.

*It DOES NOT finalize the design.* Specific materials, finishes, colors and other details and refinement are determined in later phases. It is another layer of refinement to allow you to make informed decisions on the contemplated spaces and budget.





## Concept Space Diagram From Space Needs Report

- Fills Most of Site
- On-Street Parking Only
- Required New, Relocated Fountain Basin



## Concept Exterior Images

- One or Two Building Additions
- New Fountain Structure/Design Required
- Correct Existing Maintenance Issues
- No New Parking Lot – Incorporate with Street Changes





- Existing Library  
5,094 SF footprint
- Proposed Primary  
Addition 6,718 SF
- Optional  
Secondary  
Addition 372 SF
- Total: 12,184 SF
- Mechanical in a  
Basement





# Concept Floor Plan Perspective

- Adult Area  
Shelving Increase  
117 – 165%
- Teenager Area  
Shelving Increase  
193%
- New Study Rooms
- Children's Area  
Shelving Increase  
160%
- Dedicated  
Storage Increase  
270%
- 932 SF Dividable  
Meeting Room  
with After Hours  
Access







## Concept Interior Views

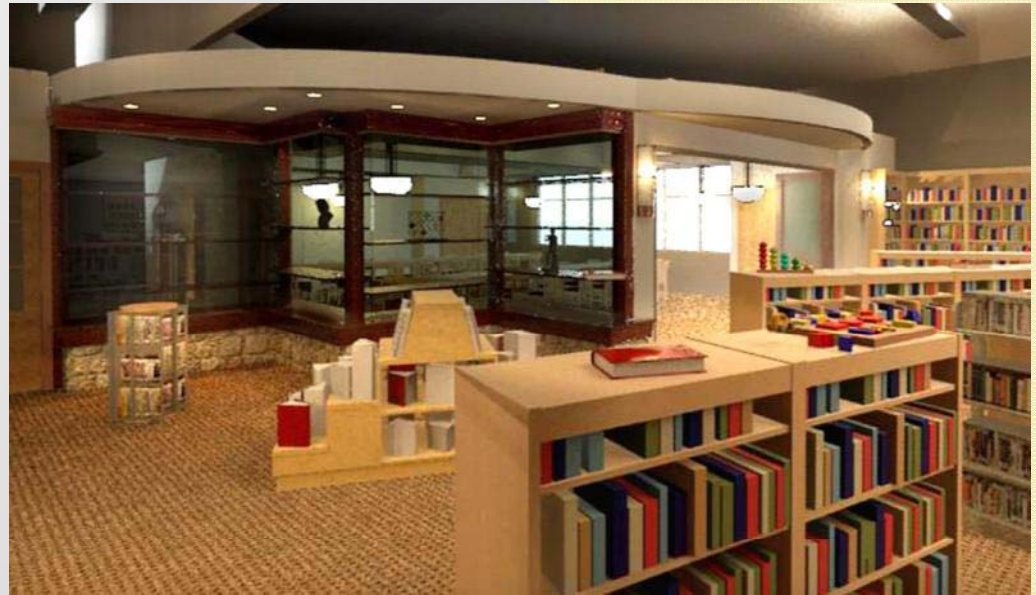
- Looking into Adult Stacks and Reading Area (Right)
- Looking From Teen Are Toward Circulation Desk (Below)





## Concept Interior Views

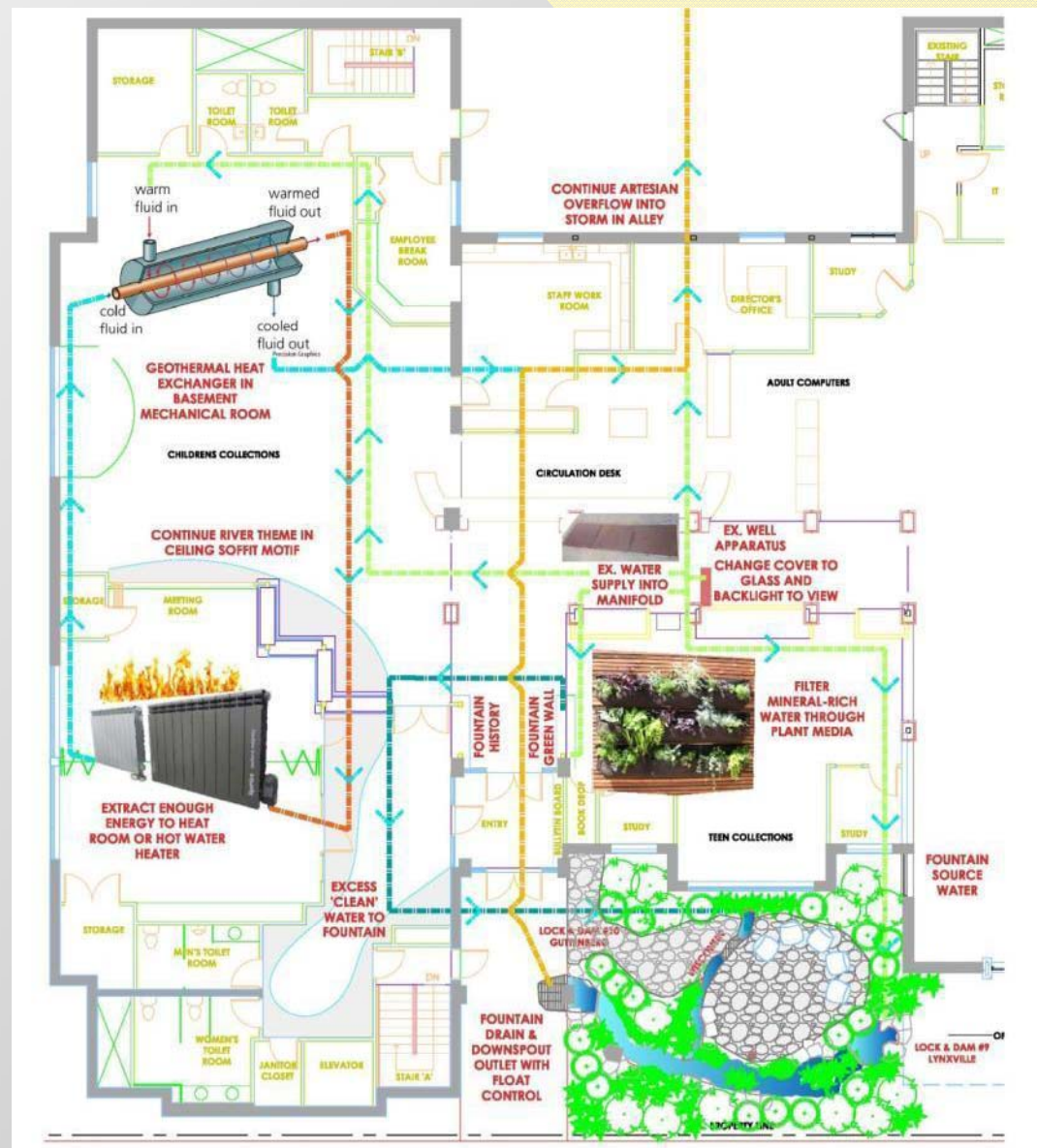
- Looking toward meeting room & display cases (Right)
- Looking Into Children's Area (Below)





# Fountain Concept

- Fountain History Includes An Original 'Medicinal' Concept
- Take Advantage of Existing Artesian Flow
- Utilize to Demonstrate Environmental and Energy Efficiency Uses:
- Geothermal
- Water Quality
- Mississippi River Representation
- Possible Grant Eligibility (NSBP Great River Road)



# Budget

- **Target \$2.92 million**

- Includes Renovation of 5,094 SF & New Addition of 6,718 SF
- Includes Furniture, Fixtures, and Equipment (FFE)
- Includes Soft Costs (e.g. fees, permits, prevailing wages)
- Includes A Renovated Fountain and Site Costs

- **Possible Additives:**

- Addition to Adult Reading Area (372-496 SF) \$56,000 - \$88,000
- VRF HVAC System \$68,750
- Basement (4,160 SF including 2<sup>nd</sup> stair and elevator) \$404,500

- **Possible Deducts/Savings:**

- Engineered Wood Siding in lieu of brick/stone (1,800 FSF) \$25,200
- Meeting Room Divider Wall (320 FSF) \$25,000 - \$32,000
- Meeting Room Glass Partition Wall (180 FSF) \$13,500 - \$16,200
- Shell Expansion Only of Meeting Room \$48,000 - \$56,000





# Next Steps

- **Confirm Budget**

- Commitment from City and County
- Library Board Remainder Target

- **Fundraising**

- Next 1-1/2 to 2 years
- To Include Grant Applications

- **Design Development**

- Once confirm how successful fundraising has been, refine design based on more firm budget
- Begin the selection of primary building systems (e.g. HVAC), roof design, and primary materials and finishes (e.g. wood versus masonry)
- Refine other amenities – basement, folding partition walls, FFE

